

Linux 下 VMware Workstation 4.0 的安装和使用

散人 <http://www.vmware.cn>

这是很早以前作的实验了，重新加了注释，和大家分享，估计新的版本也不会有太大的变化。在 Linux 下，VMware 提供了两种按装包：tar 包和 RPM 包 其中，后者更容易按装，我这里主机用的是 Redhat Linux 9。

使用 tar 包安装

```
//登陆 Linux 主机
```

```
[sanren@localhost sanren]$
```

```
//登陆到管理员权限
```

```
[sanren@localhost sanren]$ su -
```

```
Password:
```

```
[root@localhost root]#
```

```
//进入临时目录
```

```
[root@localhost root]# cd /tmp
```

```
//解压缩 tar 包
```

```
[root@localhost tmp]# tar -zxvf VMware-workstation-4.0.5-6030.tar.gz
```

```
//执行安装命令
```

```
[root@localhost tmp]# cd ./vmware-distrib/vmware-install.pl
```

```
//开始安装
```

```
Installing the content of the package.
```

```
//选择二进制文件安装路径
```

```
In which directory do you want to install the binary files?
```

```
[/usr/bin]
```

```
//选择库文件安装路径
```

```
In which directory do you want to install the library files?
```

```
[/usr/lib/vmware]
```

```
//选择操作手册文件安装路径
```

```
In which directory do you want to install the manual files?
```

```
[/usr/share/man]
```

```
//选择文档文件安装路径
```

```
In which directory do you want to install the documentation files?
```

```
[/usr/share/doc/vmware]
```

```
The path "/usr/share/doc/vmware" does not exist currently. This program is going to create it, including needed parent directories. Is this what you want?
```

```
[yes]
```

//选择初始化目录安装路径

What is the directory that contains the init directories (rc0.d/ to rc6.d)?

[/etc/rc.d]

//选择初始化脚本文件安装路径

What is the directory that contains the init scripts?

[/etc/rc.d/init.d]

The installation of VMware Workstation 4.0.5 build-6030 for Linux completed successfully. You can decide to remove this software from your system at any time by invoking the following command: "/usr/bin/vmware-uninstall.pl".

//安装结束

//启动 vmware 配置

Before running VMware Workstation for the first time, you need to configure it by invoking the following command: "/usr/bin/vmware-config.pl". Do you want this program to invoke the command for you now? [yes]

//停止 VMware Workstation 的服务

Making sure VMware Workstation's services are stopped.

Stopping VMware services:

Virtual machine monitor

[确定]

You must read and accept the End User License Agreement to continue.

Press enter to display it.

//终端用户许可协议

END USER LICENSE AGREEMENT

FOR VMWARE(TM) DESKTOP SOFTWARE PRODUCT

APRIL 14, 2003 (Workstation version 4)

VMWARE, INC. LICENSES THIS DESKTOP SOFTWARE PRODUCT TO YOU SUBJECT

TO THE TERMS CONTAINED IN THIS END USER LICENSE AGREEMENT ("EULA"). READ THE TERMS OF THIS EULA CAREFULLY. BY INSTALLING, COPYING OR OTHERWISE USING THE SOFTWARE (AS DEFINED BELOW), YOU AGREE TO BE BOUND BY THE TERMS OF THIS EULA. IF YOU DO NOT AGREE WITH THE TERMS OF THIS EULA, DO NOT INSTALL, COPY OR USE THE SOFTWARE AND IF YOU HAVE PROOF OF PAYMENT, YOU MAY RETURN THE UNUSED SOFTWARE TO THE LOCATION AT WHICH YOU ACQUIRED IT WITHIN THIRTY (30) DAYS FOR A REFUND OF THE LICENSE FEE.

.....

CONTACT INFORMATION

If you have any questions about this EULA, or if you want to contact VMware for any reason, please direct all correspondence to: VMware, Inc., 3145 Porter Drive, Palo Alto, CA 94304, United States of America or email info@vmware.com.

VMware is a trademark of VMware, Inc.

CONTACT INFORMATION

好长啊，足足有几页，要用的话就接受。

//是否接受许可协议

Do you accept? (yes/no) yes

Thank you.

//安装监视模块

Trying to find a suitable vmmon module for your running kernel.

The module up-2.4.20-8.athlon-RH9.0 loads perfectly in the running kernel.

//安装虚拟网络模块

Trying to find a suitable vmnet module for your running kernel.

The module up-2.4.20-8.athlon-RH9.0 loads perfectly in the running kernel.

//配置网络

Do you want networking for your virtual machines? (yes/no/help) [yes] yes

//配置 vmnet0

Configuring a bridged network for vmnet0.

//配置 vmnet8

Configuring a NAT network for vmnet8.

//探测 DHCP 子网 1,自动探测，随机选择

Do you want this program to probe for an unused private subnet? (yes/no/help)

[yes]

Probing for an unused private subnet (this can take some time)...

The subnet 172.16.151.0/255.255.255.0 appears to be unused.

The version of DHCP used in this version of VMware Workstation is licensed as described in the "/usr/share/doc/vmware/DHCP-COPYRIGHT" file.

Hit enter to continue.

//探测 DHCP 子网 2，以主机网卡所在的网段为 DHCP 的地址域

Do you want this program to probe for an unused private subnet? (yes/no/help)
[yes] n

What will be the IP address of your host on the private network? 192.168.100.0

What will be the netmask of your private network? 255.255.255.0

The version of DHCP used in this version of VMware Workstation is licensed as described in the "/usr/share/doc/vmware/DHCP-COPYRIGHT" file.

Hit enter to continue.

//配置 host-only 网络环境，如不需要可以不必配置。

Do you want to be able to use host-only networking in your virtual machines?
[no] n

//配置 Samba 文件系统访问

Do you want this program to automatically configure your system to allow your virtual machines to access the host's filesystem? (yes/no/help) [no] y

The version of Samba used in this version of VMware Workstation is licensed as described in the "/usr/share/doc/vmware/SAMBA-LICENSE" file.

Hit enter to continue.

Starting VMware services:

Virtual machine monitor	[确定]
Virtual ethernet	[确定]
Bridged networking on /dev/vmnet0	[确定]
Host-only networking on /dev/vmnet1 (background)	[确定]
Host-only networking on /dev/vmnet8 (background)	[确定]
NAT networking on /dev/vmnet8	[确定]

//配置 Samba 客户端帐户

You have successfully configured VMware Workstation to allow your virtual machines to access the host's filesystem. Would you like to add a username and password for accessing your host's filesystem via network interface vmnet1 at this time? (yes/no/help) [yes] y

//主机上存在的用户

Please specify a username that is known to your host: sanren

New SMB password:

Retype new SMB password:

Added user sanren.

You have successfully configured VMware Workstation to allow your virtual machines to access the host's filesystem. Your system appears to already be setup with usernames and passwords for accessing the host's filesystem via network interface vmnet1. Would you like to add another username and password at this time? (yes/no/help) [no] n

You can add more usernames at any time by invoking the following command as root: "/usr/bin/vmware-smbpasswd vmnet1 -a <username>"

// Samba 配置完成

The configuration of VMware Workstation 4.0.5 build-6030 for Linux for this running kernel completed successfully.

//vmware 配置完成

You can now run VMware Workstation by invoking the following command: "/usr/bin/vmware".

Enjoy,

--the VMware team

使用 RPM 包安装

//执行安装命令

```
[root@localhost tmp]# rpm -ivh VMware-workstation-4.0.5-6030.i386.rpm
```

```
Preparing... ##### [100%]
```

```
1:VMwareWorkstation #####
```

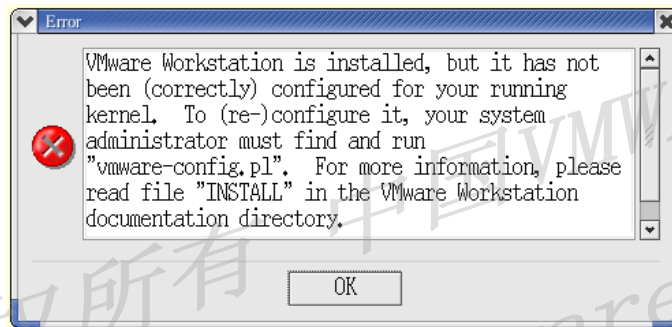
[100%]

//安装完成

新建一台虚拟机

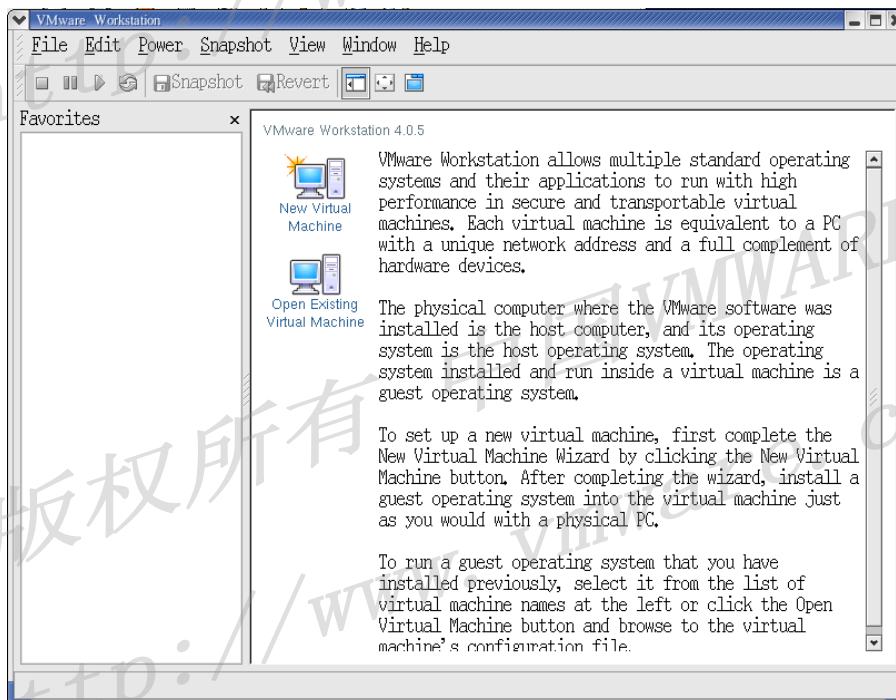
1. 启动 VMwareWorkstation 主程序

```
[root@localhost tmp]#vmware &
```

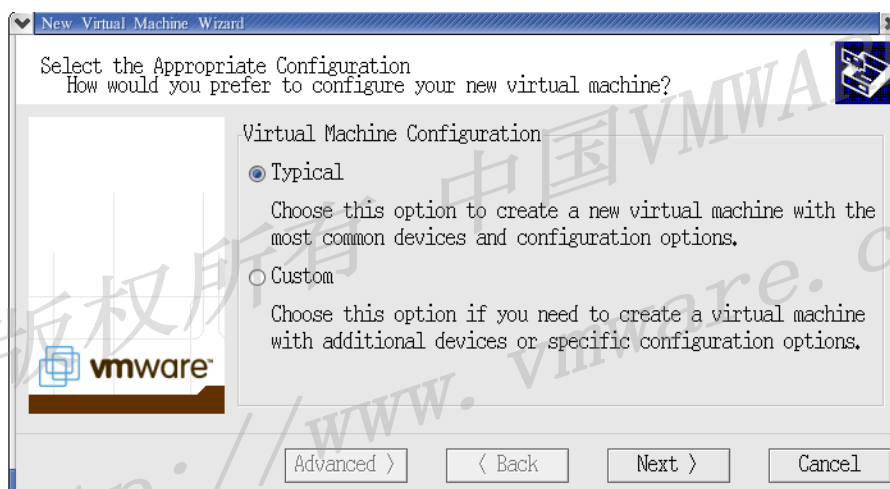


提示：必须运行 `vmware-config.pl` 进行配置，然后才能正常启动 VMware Workstation。

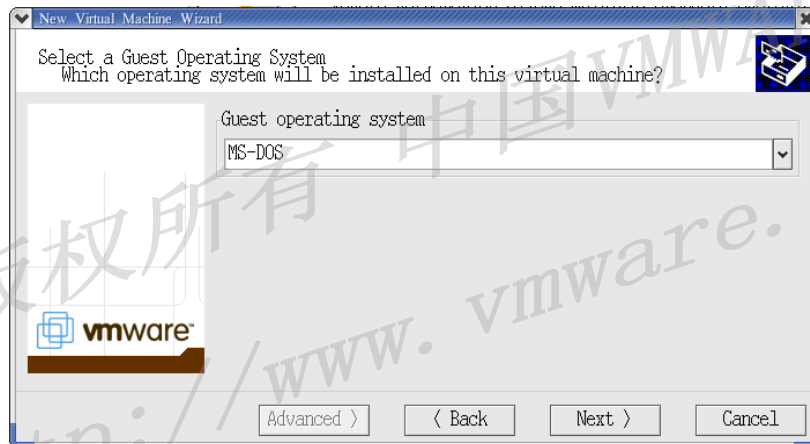
2. 单击“新建虚拟机”



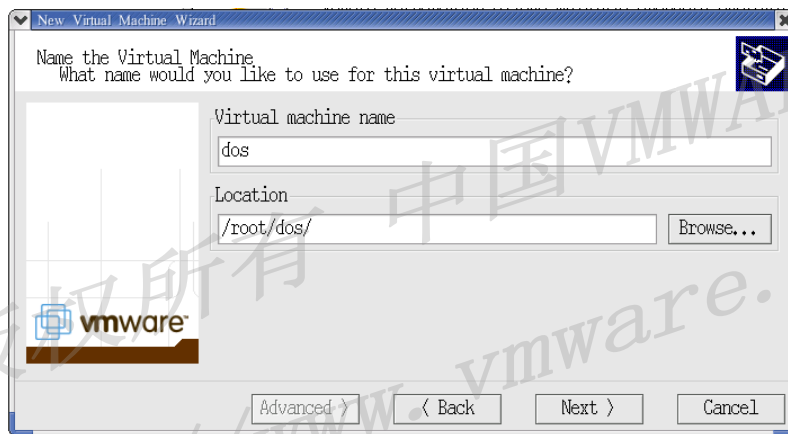
3. 选择“典型配置”



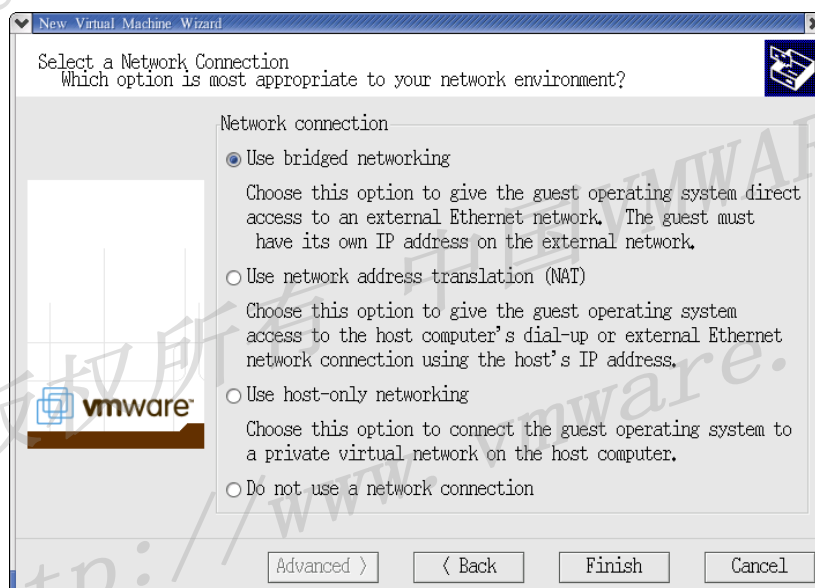
4. 选择客户操作系统



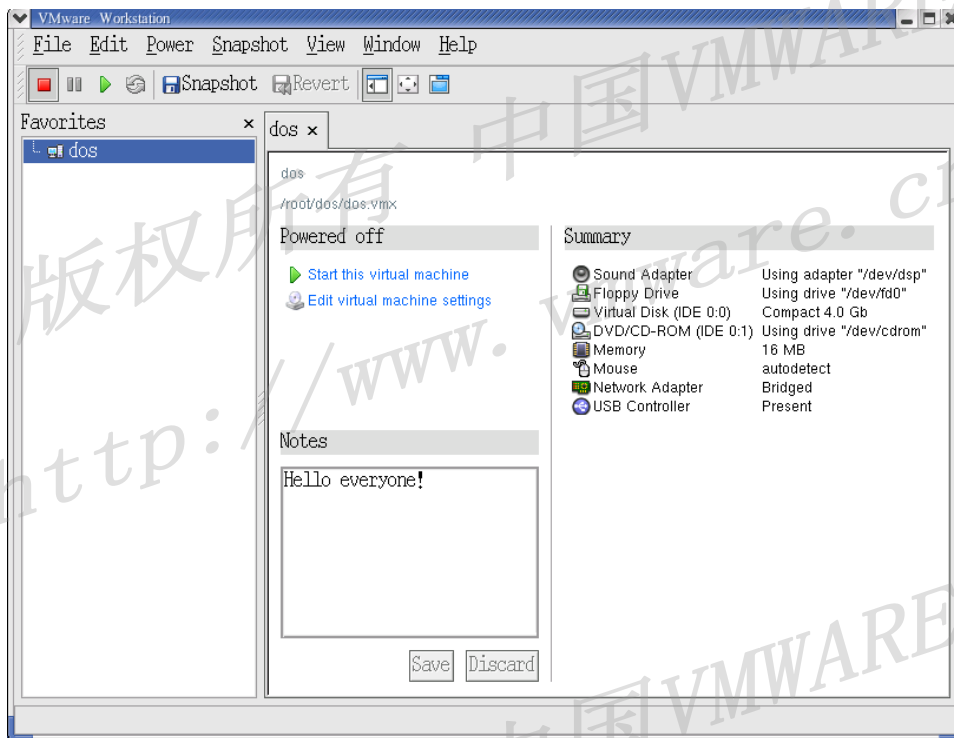
5. 虚拟名称和安装路径



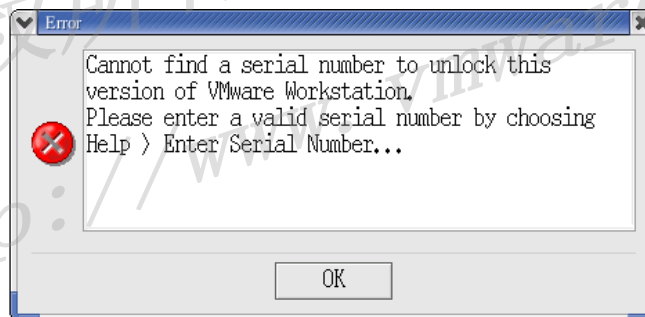
6. 配置网络



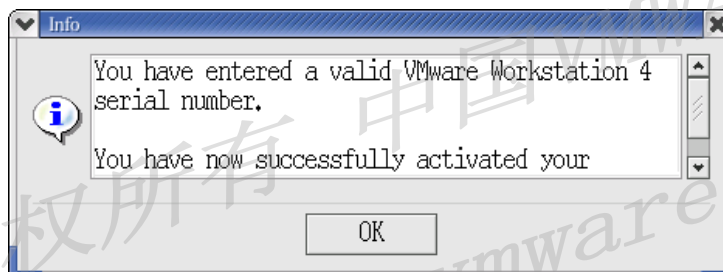
7. 完成安装



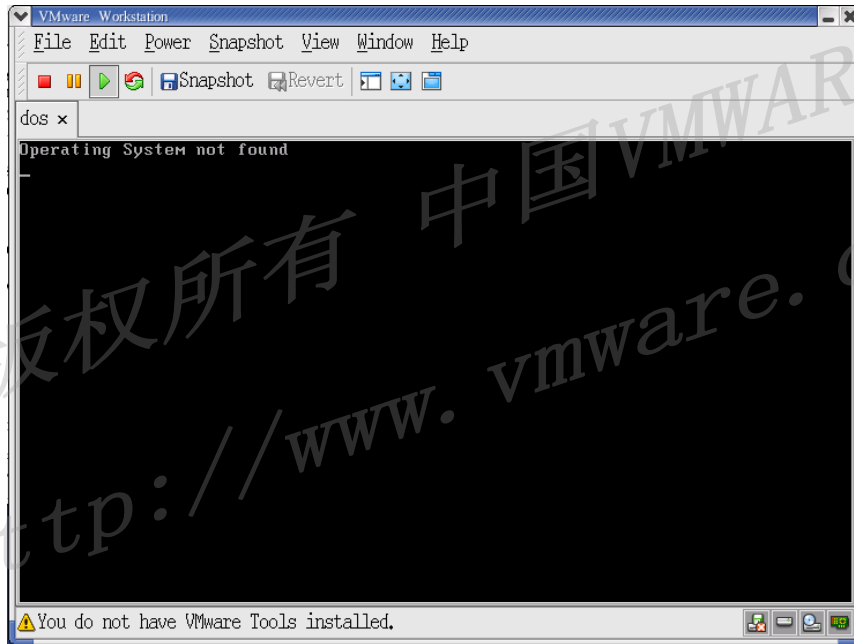
8. 第一次启动虚拟机，提示输入安装序列号



9. 输入正确的序列号，提示成功



10. 启动新建的虚拟机



这样，一台虚拟机就建好了，使用方面，和 Windows 版本基本相同。

卸载

如果是 tar 包安装：

```
vmware-uninstall.pl
```

如果是 rpm 包安装：

```
rpm -e VMwareWorkstation
```

最后，欢迎大家访问散人的家——中国VMWARE论坛，<http://www.vmware.cn>，更加深入的交流探讨虚拟机软件的应用和发展。本文中所提及的所有未涉及版权的软件，均可以在散人的站点找到。

散人的灌水文章，欢迎交流指正。

作者：散人

Email: wjx@srju.net

Msn: vmware@srju.net

QQ 虚拟机技术交流群： 4267131

日期：2004.9